

PROFINET-INspektor® NT

Function

The **PROFINET-INspektor® NT** is a passive data collector that analyzes telegram traffic in PROFINET and Ethernet networks in terms of events like

- Update times
- Telegram jitter
- Telegram gaps
- Error telegrams
- Network utilization
- Broad/multicast loads
- Diagnostic messages and device failures

analyzed. This information reflects the current status of the communication quality on the PROFINET and forms the basis for condition-based maintenance for condition-based maintenance. By storing data in the device, events in the network can be tracked and evaluated directly via the display or in detail via the integrated web server can be tracked and evaluated.

The installation location of the PROFINET-INspektor® NT is recommended as a fixed installation within the network connection between the automation device (controller) and the first IO device or switch, as the majority of communication typically takes place within this connection takes place within this connection.

The active scan function of the PROFINET-INspektor® NT allows the user to record and document an up-to-date topology plan of a PROFINET/Ethernet network, including all important device information, at any time. This scan can then be evaluated with the PROscan® Active software or used cyclically with PROmanage® NT for permanent network monitoring.

Technical data

- Network connection
 - PROFINET: 2 x 10/100Base-T RJ45 ports
 - Web interface: 2 x 10/100/1000Base-T RJ45 ports
- Power supply: 24V DC ±10%
- Max. Current consumption: 350mA
- Max. Power loss: 8.5W
- Dimensions (H x W x D): 123 x 105 x 129mm incl. top-hat rail clip
- Weight: 0.84 kg
- Housing: Aluminium, anodized
- Operating temperature: +5°C to +55°C
- Storage temperature: -20°C to +70°C
- Humidity: 10% to 90%, non-condensing
- Protection class: IP20
- Mounting: TS35 DIN top-hat rail

General data

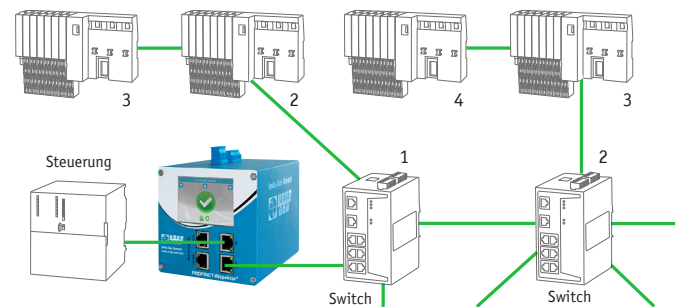
- PROFINET analysis: IRT (unicast), RT, RT via UDP/IP
- Alerting: relay, SNMP trap, e-mail, TCP event, MQTT message
- Protocols / services: HTTP, HTTPS, OPC UA Server, SNMPv1, SNMPv2, REST-API, DHCP Client, SMTP client, SNTIP client, LLDP, MQTT
- Network scan incl. topology
- Acceptance mode

Scope of delivery StarterKIT

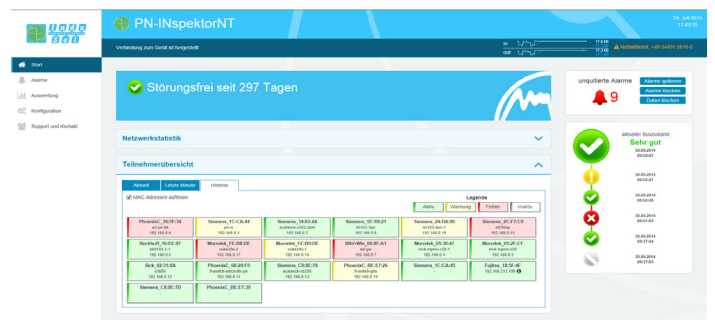
- PROFINET-INspektor® NT
- PROmanage® NT (24 ports)
- Power supply unit
- Patch cable
- Carrying case



PROFINET-INspektor® NT



PROFINET-INspektor® NT „Its position in network“



Web interface

Ordering details	Art. No.
PROFINET-INspektor® NT	124030100
PROFINET-INspektor® NT StarterKIT	124030120